

The Way West

Directions: Color maps. Trace trail lines in different colors. Cut on solid lines, fold on dotted lines.

The Pony Express route was nearly 2000 miles long overland, had about 190 stations. It took about 10 days to cover. Each rider generally rode 75 to 100 miles and changed horses every 10 to 15 miles.

The service (used mainly by newspapers and businesses) was remarkably efficient — during its 18 months, only one bag of mail was reported lost — but it was ultimately an expensive stopgap. It ceased with the completion of the transcontinental telegraph system.

Source: <https://www.britannica.com/topic/Pony-Express>

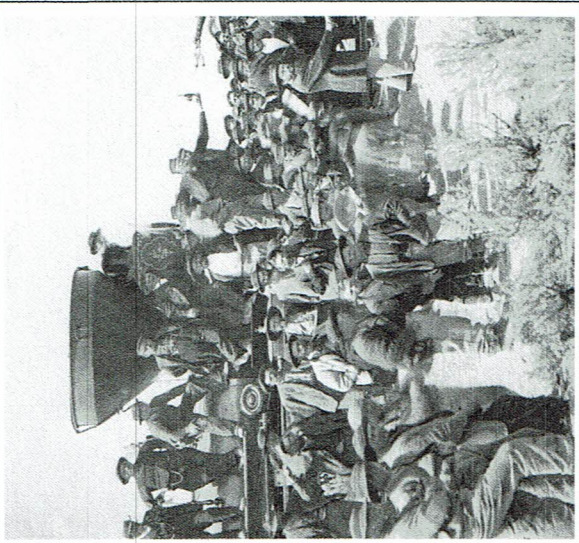


Directions: Write bold words on spaces provided. Cut on solid lines, fold on dotted lines. The **Pony** Express route was nearly **2,000** miles long overland, had about **190** stations. It took about **10 days** to cover. Each rider generally rode **75 to 100 miles** and changed **horses** every **10** to 15 miles. The service (used mainly by newspapers and businesses) was remarkably **efficient**—during its 18 months, only **one** bag of mail was reported **lost**—but it was ultimately an expensive stopgap. It **ceased** with the completion of the transcontinental **telegraph** system.

<h1>CA</h1> <h2>Timeline</h2>	Native Americans Native People	Russia 1552-1841	England Sir Francis Drake 1577-79	Spain 1768-1821
	Spanish Missions West Coast of CA	Mexico 1821-1846	Bear Flag Revolt 1846	Gold Rush 1849
[glue]	State of California 1850	Railroad 1862		
[glue]				

Directions: Write bold words into squares. Cut on solid lines, fold on dotted lines. Glue into one long strip. Native Americans: **Native People**. Russia: **1552-1841**. England: **Sir Francis Drake 1577-79**. Spain: **1768-1821**. Spanish Missions: **West Coast of CA**. Mexico: **1821-1846**. Bear Flag Revolt: **1846**. Gold Rush: **1849**. State of CA: **1850**. Railroad: **1862**

In 1863 the race between the Union Pacific and Central Pacific Railroads to complete the most track laid across the Middle and Western United States begins. The railroads met on May 10, 1869 in Promontory Point, Utah to connect the tracks to form the first Transcontinental Railroad.



[glue]



Directions: Write bold words on lines. Cut on solid lines, fold on dotted lines.
In **1863** the **race** between the **Union** Pacific and **Central** Pacific Railroads to **complete** the most **track** laid **across** the Middle and Western United **States** begins. The railroads **meet** on May 10, **1869** in Promontory Point, **Utah** to **connect** the **tracks** to form the first **Transcontinental** Railroad.